

SPECIFICATION

Industrial Grade PS/2 Power Supply

**Universal AC Input
460W ATX Output
(3.3V & +5V: 50A Max.)**



P/N: P6460ZI

**** Specification Approval****

This specification (total 8 pages including cover page) is approved in it's entirety by:

Company Name

Print Name

Signature

Date



Santa Clara CA 95054
Tel: 1-408-980-9813
Fax: 1-408-980-8626
Email: infor@topmicro.com
Web: www.topmicro.com
080611V.A6

1.0 Scope

This specification defines the performance characteristics of a grounded, Ac input, 460 watts, 6 output level power supply. This specification also defines world wide safety requirements and manufactures process test requirements.

2.0 Input requirements

2.1 Voltage (sinusoidal) : 100 ~ 240 VAC full range (With \pm 10% tolerance).

2.2 Frequency

The input frequency range will be 47hz ~ 63hz.

2.3 Steady-state current

7.5/3.5A at any low/high range input voltage.

2.4 Inrush current

65/125 Amps @ 110/220 VAC

2.5 Power factor correction

The power supply modules shall incorporate universal power input with active power factor correction, which shall reduce the line harmonics in accordance with the IEC61000-3-2 standards.

PFC: up to the target of 95% @230V, full load.

3.0 Output requirements

3.1 DC load requirements

Normal Output voltage	Load current(A)		Regulation tolerance	
	Min.	Max.	Min.	Max.
+5V	2.5	40	-5%	+5%
+12V	1.0	32	-5%	+5%
-5V	0	0.8	-5%	+5%
-12V	0	1	-5%	+5%
+3.3V	1.0	30	-5%	+5%
+5Vsb	0.1	2.0	-5%	+5%

+5V & +3.3V total max current: 50A

Total power : 460W (Max)

When doing the cross regulation test (one output channel at high load and the other output channels at low load), it is requested to set the higher output channel at 90% max. of its spec., and the lower output channels at 20% max. of theirs.

3.2 Regulation and protection

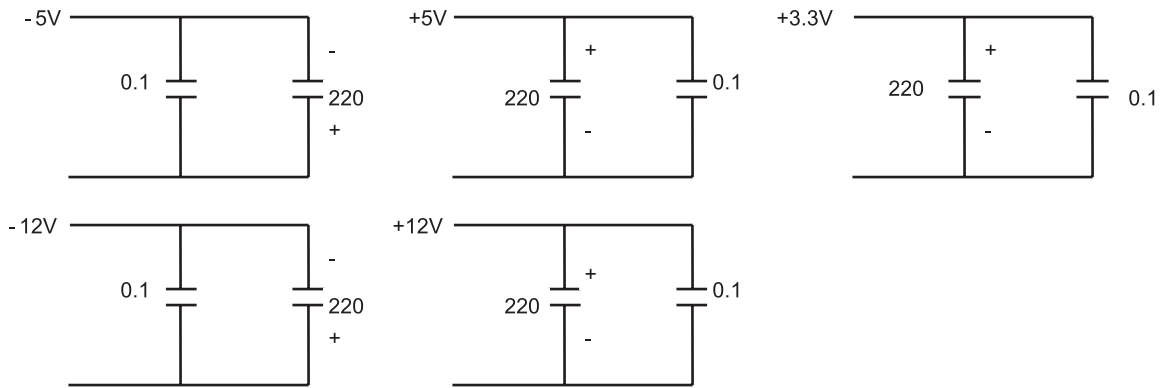
Output DC voltage	Line regulation	Load regulation	Cross regulation
+5V	±50mV	±250mV	±250mV
-5V	±50mV	±250mV	±250mV
+12V	±50mV	±600mV	±600mV
-12V	±50mV	±600mV	±600mV
+3.3V	±50mV	±165mV	±165mV
+5Vsb	±50mV	±250mV	±250mV

3.3 Ripple and noise

3.3.1 Specification

+5V	60mV (P-P)
+12V	100mV (P-P)
-5V	100mV (P-P)
-12V	100mV (P-P)
+3.3V	60mV (P-P)
+5Vsb	60mV (P-P)

3.3.2 Ripple voltage test circuit



0.1µF is ceramic the other is tantalum.
Noise bandwidth is from DC to 20MHz

3.4 Overshoot

Any overshoot at turn on or turn off shall be less 15% of the nominal voltage value , all output shall be within the regulation limit of section 3.2 before issuing the power good signal of section 6.0.

3.5 Efficiency

Power supply efficiency typical 70% at 115V, full load.

4.0 Protection

4.1 Input (primary)

The input power line must have an over power protection device in accordance with safety requirement of section 8.0

4.2 Output (secondary)

4.2.1 Over power protection

The power supply shall provide over power protection on the power supply latches all DC output into a shutdown state. Over power of this type shall cause no damage to power supply , after over load is removed and a power on/off cycle is initiated , the power supply will restart.

Trip point total power min. 110% , max. 150%.

4.2.2 Over voltage protection

If an over voltage fault occurs , the power supply will latch all DC output into a shutdown state.

	Min	Typical	Max
+3.3V	3.9V	4.1V	4.3V
+5V	5.7V	6.1V	6.5V
+12V	13.6V	14.3V	15.0V

4.2.3 Over current protection

If an over current fault occurs , the power supply will latch all DC output into a shutdown state.

	Min	Typical	Max
+3.3V	33A	39A	45A
+5V	44A	52A	60A
+12V	35.2A	41.6A	48A

4.2.4 Short circuit

A short circuit placed on +5V,+3.3V,+12V,-5V,-12V output to DC return shall cause no damage and power supply latch.

5.0 Power supply sequencing

5.1 Power on (see fig.1)

5.2 Hold up time

When power shutdown DC output 5V must be maintain 16msec in regulation limit at full load under 90VAC input voltage.

5.3 Power off sequence (see fig. 1)

6.0 Signal requirements

6.1 Power good signal (see fig. 1)

The power supply shall provide a "power good" signal to reset system logic, indicate proper operation of the power supply.

At power on, the power good signal shall have a turn on delay of at least 100ms but not greater than 500ms after the output voltages have reached their respective minimum sense levels.

7.0 Environment

7.1 Operation

Temperature	0 to 50 degrees centigrade
-------------	----------------------------

7.2 Insulation resistance

Primary to secondary	: 30 meg. Ohm min. 500 VDC
----------------------	----------------------------

Primary to FG	: 30 meg. Ohm min. 500VDC
---------------	---------------------------

7.3 Dielectric withstanding voltage

Primary to secondary	: 1800 VAC for 60 Second.
----------------------	---------------------------

Primary to FG	: 1800 VAC for 60 Second.
---------------	---------------------------

7.4 Leakage current

3.5 mA max. at nominal voltage VAC

8.0 Safety

8.1 Underwriters laboratory (UL).

The power supply designed to meet UL 60950.

8.2 Canadian standards association (CUL)

The power supply designed to meet CSA 1402C & CSA 950.

8.3 TUV

The power supply shall be designed to meet TUV EN-60950.

9.0 Reliability

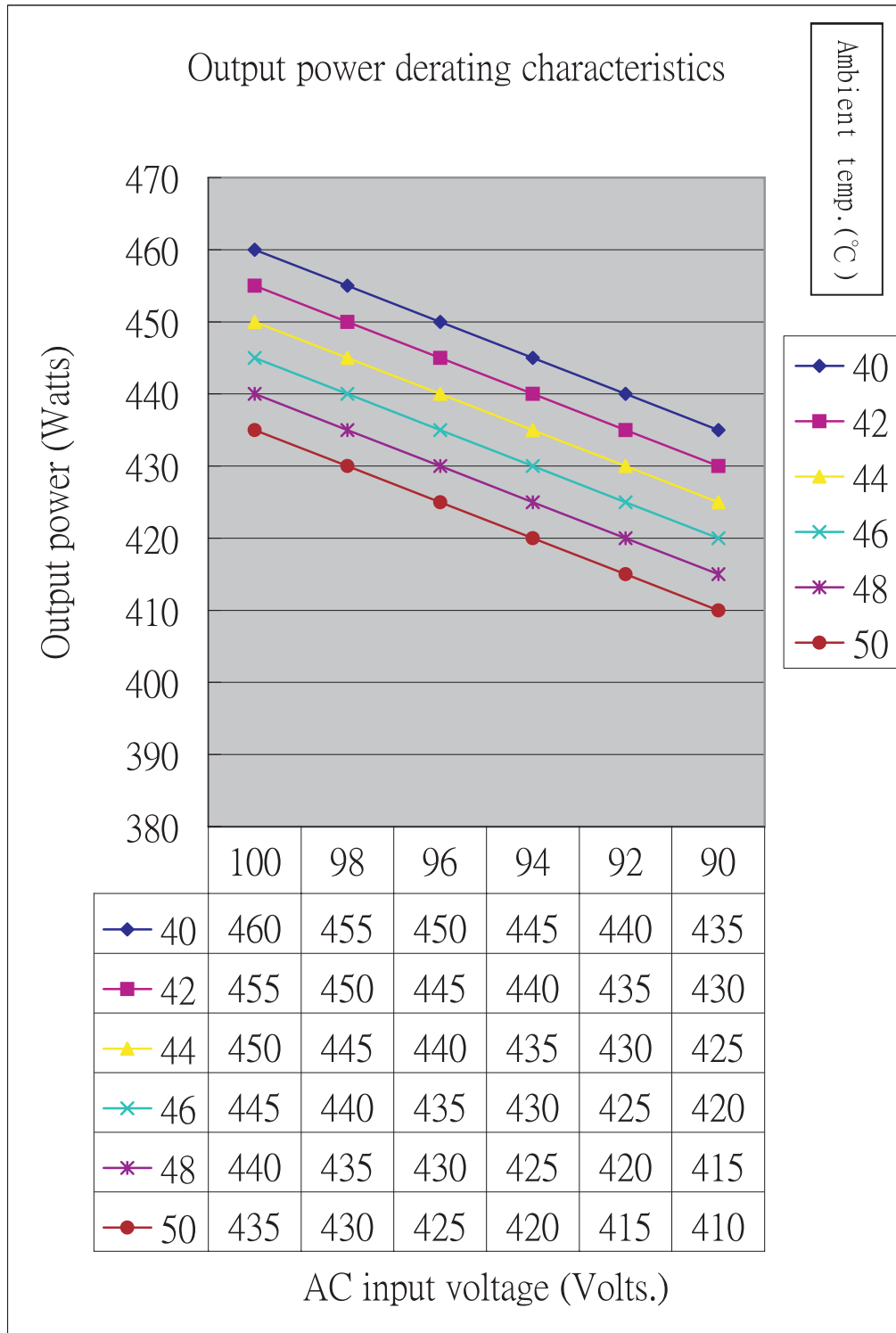
9.1 Burn in

All products shipped to customer must be burn in. The burn in shall be performed at high line voltage.

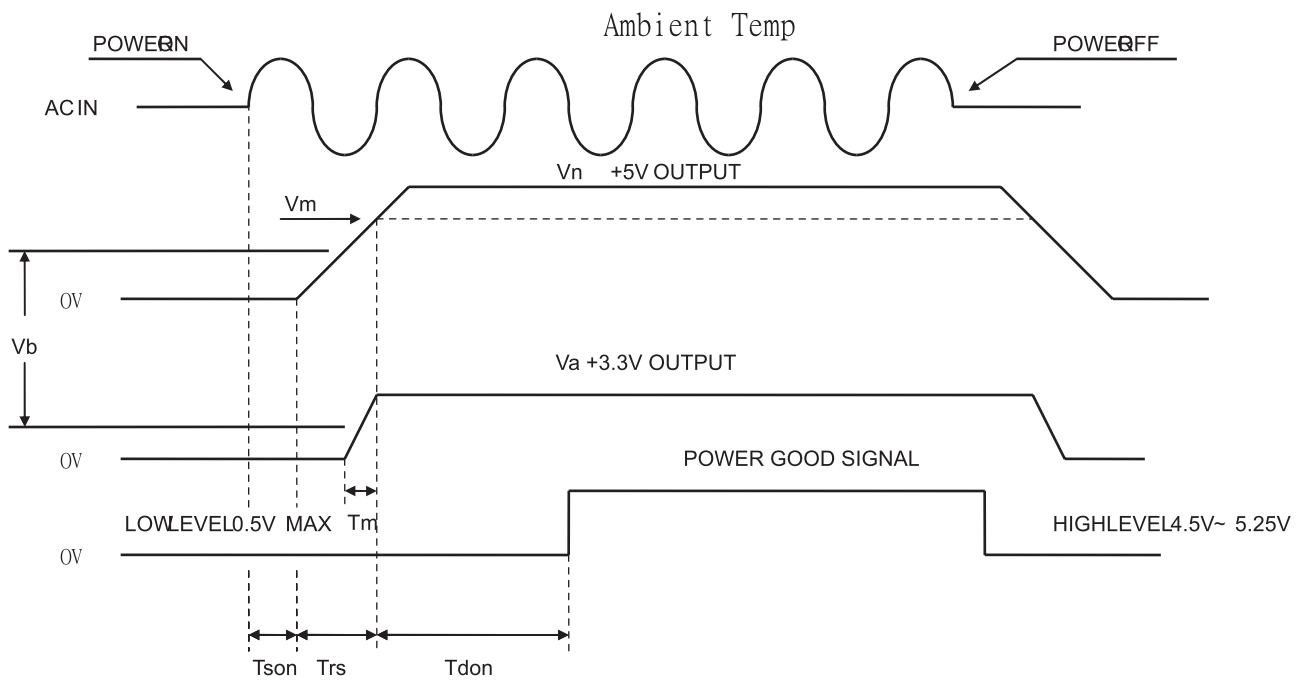
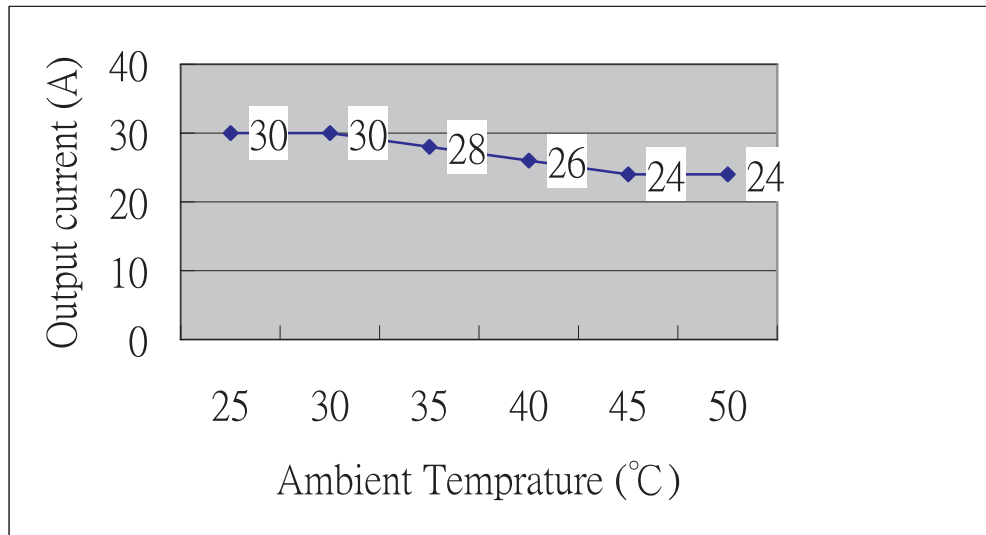
10.0 Mechanical requirements

10.1 Physical dimension : 150 mm(D) * 140 mm(W) * 86 mm(H)

11.0 Output power derating characteristics

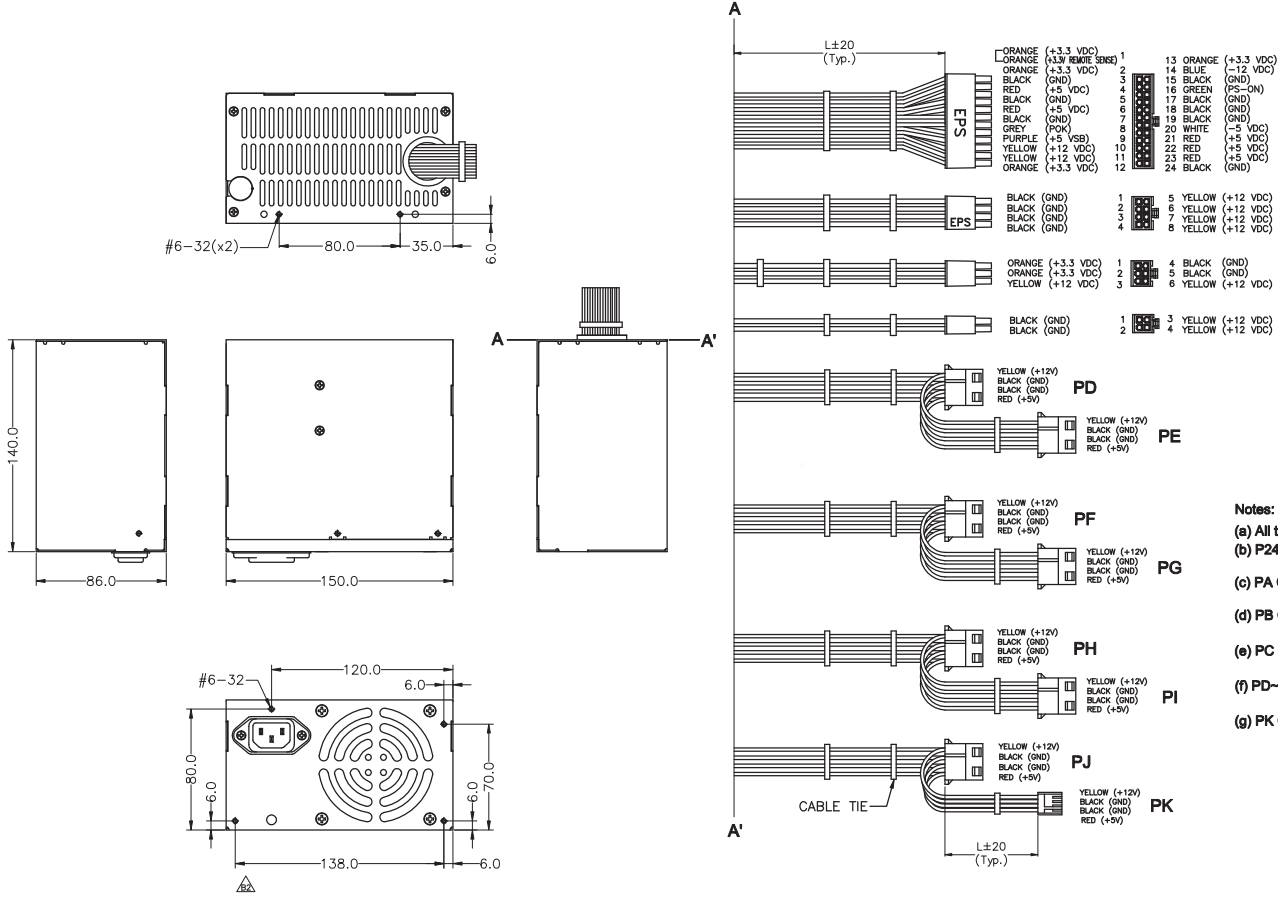


12.0 +3.3V output current and ambient temp curves



- Vn Nominal voltages +5V
- Vm Minimum voltages +4.5V
- Va Nominal voltages +3.3V
- Vb +2.0V max
- Tson Switch on time (1000 ms. max.)
- Trs +5V rise time (20ms. max.)
- Tdon Delay turn-on (100ms. < Tdon < 500ms.)
- Tdoff Delay turn-off (1 ms. min.)

《Figure 1》



WIRE LENGTH LIST		
Housing	Length(L)	
P24	PA	520
	PB	820
	PC	520
PA	PD	520
	PE	200
PB	PF	520
	PG	200
PC	PH	520
	PI	200
	PJ	520
	PK	200

Tolerances:±20
Units:mm

- Notes:**
- (a) All the Length of Output Wires Exclude Housing.
 - (b) P24 Connector: MOLEX 39-01-2240 or EQUIV.
Terminal: MOLEX 39-00-0059 or EQUIV.
 - (c) PA Connector: MOLEX 39-01-2080 or EQUIV.
Terminal: MOLEX 39-00-0059 or EQUIV.
 - (d) PB Connector: MOLEX 39-01-2080 or EQUIV.
Terminal: MOLEX 39-00-0059 or EQUIV.
 - (e) PC Connector: MOLEX 39-01-2040 or EQUIV.
Terminal: MOLEX 39-00-0059 or EQUIV.
 - (f) PD~PJ Connector: AMP 1-480424-0 or EQUIV.
Terminal: AMP 61117-4 or EQUIV.
 - (g) PK Connector: AMP 171822-4 or EQUIV.
Terminal: AMP 170262-1 or EQUIV.