

SPECIFICATION

P/N: P7520S 1F

**520W 1U ATX PFC
Industrial Grade Power Supply**



Specification subject to change without prior notice.



3261 Keller St.
Santa Clara, CA 95054
Tel: 408-980-9813
Fax: 408-980-8626
E-mail: infor@topmicro.com

1.	SCOPE	3
2.	AC INPUT	3
3.	DC OUTPUT	3
	3.1 VOLTAGE and CURRENT LOAD RANGES	3
	3.2 CROSS REGULATION	4
	3.3 OUTPUT RIPPLE and NOISE	4
	3.4 DYNAMIC DC OUTPUT CHARACTERISTICS	4
	3.5 DC OUTPUT ON/OFF CONTROL	5
4.	OUTPUT PROTECTION	5
	4.1 TOTAL POWER PROTECTION	5
	4.2 OVER VOLTAGE PROTECTION	5
	4.3 SHORT CIRCUIT PROTECTION	5
	4.4 RESET AFTER SHUTDOWN	5
5.	POWER GOOD SIGNAL	6
6.	EFFICIENCY	6
	6.1 AT FULL LOAD	6
	6.2 ENERGY STAR MODE	6
	6.3 STANDBY MODE	6
7.	COOLING OF PSU	6
8.	ACTIVE POWER FACTOR CORRECTION (PFC)	6
9.	ENVIRONMENT	7
	9.1 OPERATING	7
	9.2 SHIPPING / STORAGE	7
10.	MTBF	7
11.	EMC	7
12.	SAFETY	7
13.	MECHANICAL DRAWING	8

1. SCOPE

This specification defines electrical performance and characteristic of “**P7520S 1F**” Full Range Power supplies which comply with Intel EPS1U v2.1 and ATX12V v2.0 Requirements.

2. AC INPUT

	RANGE ¹ .		
Limits	Minimum	Maximum	Unit
AC Input voltage	90	264	Vac
AC Input frequency	47	63	Hz
AC Input Current		9	Amp(rms)
Inrush current ² . (cold start)		100	Amp(peak)
Inrush current (warm start)	NO COMPONENT OVER STRESSED.		
	NO FUSE BLOW NO DAMAGE TO THE POWER SUPPLY.		
NOTE: 1. The AC input is 90~264 Vac full range. No selectable hard switch is provided. 2. Measured at 25 Deg C Ambient			

3. DC OUTPUT :**3.1 VOLTAGE and CURRENT LOAD RANGES**

	DC OUPTUT	Tolerance
Group1	+3.3VDC	+5%/-5%
	+5VDC	+5%/-5%
	+12VDC	+5%/-5%
	-12VDC	+10%/-10%
Group2	+5Vsb	+5%/-5%

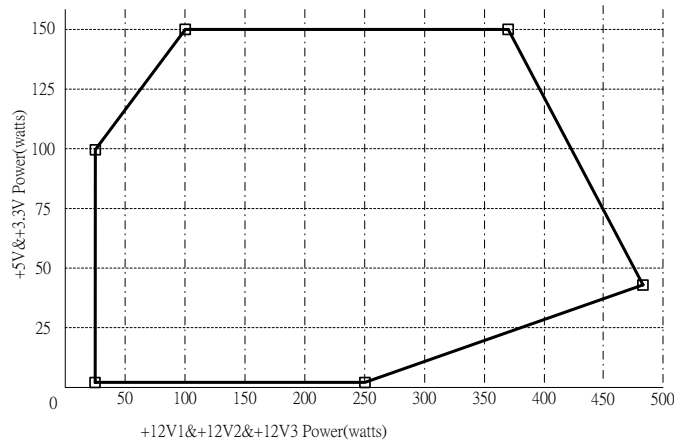
Load Range

Output	Minimum Load	Maximum Load	Peak Load
+12V1	1A	14A	17A
+12V2	1A	14A	17A
+12V3	1A	15A	18A
+5V	0.3A	25A	X
+3.3V	0.5A	20A	X
-12V	0A	0.8A	X
+5Vsb	0A	3A	3.5A

1. Maximum continuous total DC output power should not exceed 520 W
2. Maximum continuous combined load on +3.3 VDC and +5 VDC outputs should not exceed 150 W
3. Maximum continuous combined load on +12V1&+12V2&+12V3 outputs should not exceed 40A(480W)
4. Maximum peak total DC output power should not exceed 572 W
5. Peak power and current loading should be supported for a minimum of 1 second
6. +12V1&+12V2&+12V3 have separate current limit circuits to meet 240VA safety requirements.

3.2 CROSS REGULATION

The +5V & +3.3V combined load and +12VDC load shall remain within the regulation Defined in section 3.1 over cross load combinations shown as following figure:



3.3 OUTPUT RIPPLE and NOISE

Measurement is made with an oscilloscope with 20 MHz bandwidth. Output should be bypassed at the connector with a 0.1uF ceramic disk capacitor and a 10uF electrolytic capacitor to simulate system load. The length of ground wire on probe should not longer than 40mm, if a non - differential type of scope was used.

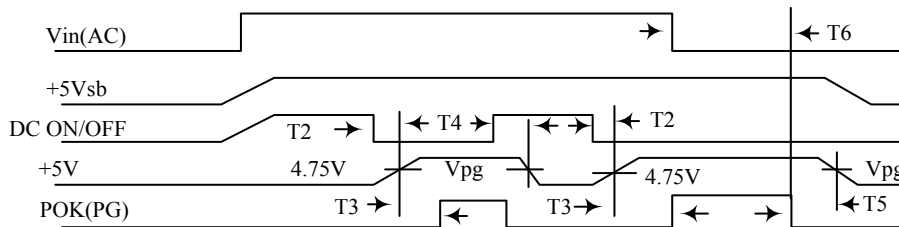
+3.3V	+5V	+12V	-12V	+5Vsb
50Mv	50mV	120mV	120mV	50 mV

3.4 DYNAMIC DC OUTPUT CHARACTERISTICS

+/-10% Max. (tested with capacitors added at output) Excursion for 30% max. load change with return to regulation in 0.5 mS.

3.5 DC OUTPUT ON/OFF CONTROL

A low active PS-ON (DC ON/OFF) input signal is equipped, which provide the interface to **ENABLE** or to **DISABLE** the **GROUP1** of DC output. This signal is electrically compatible to interface with **TTL,OPEN COLLECTOR** and the **HARD SWITCH**.



SIGNAL NAME		MAXIMUM	MINIMUM
T2	+5V TURN-ON DELAY	20 mS	
T3	RESET TIME	500 mS	100 mS
T4	DC SAVE TIME		1 mS
T5	SAVE TIME	Vpg= 4.75V	1 mS
T6	HOLD-ON TIME (AT NOMINAL AC INPUT)		16 mS

4. OUTPUT PROTECTION

4.1 TOTAL POWER PROTECTION: (OPP)

Total power 135% max with shut-down and latch off protection.

4.2 OVER VOLTAGE PROTECTION: (OVP)

OVER VOLTAGE AT	ACTIVE RANGE		RESULT
	Min.	Max.	
+3.3V	3.76V	4.3V	Shut down & Latch OFF The Group 1 DC Output
+5V	5.74V	7.0V	
+12V	13.4V	15.6V	

4.3 SHORT CIRCUIT PROTECTION: (SCP)

The short between any output of group 1 will shut down all group1.
 The short at group 2 will Shut down both group 1 and group 2.

4.4 RESET AFTER SHUTDOWN

Whenever the power supply latches into shutdown state due to fault condition on its output, The power supply will return to normal operation only after the fault has been removed and the power switch has been cycled off/on with **A MINIMUM OFF TIME OF 20mS.** (PS-ON)

5. POWER GOOD SIGNAL:

Signal Type: open collector +5DC, TTL compatible.
 Logic Level: <0.4V while sinking 4 mA.
 Logic Level High: between 2.4VDC and +5V output while sourcing 200 uA.

6. EFFICIENCY:

6.1 AT FULL LOAD:

Over 70% at normal input voltage.
 75% typical at AC 110v 60Hz , 78% typical at AC 220v 50Hz

6.2 ENERGY STAR MODE

Over 50% at 104W max power consumption with 52W or more delivered to DC power output

6.3 STANDBY MODE

During measurement of the "STANDBY MODE" condition, the main converter is off (PS_ON=High). +5Vsb converter is working and standby input power is measured.

true RMS input power (standby) +5Vsb/ 0.5A; input voltage: 230VAC 50HZ	< 5W
true RMS input power (standby) +5Vsb/ 0A; input voltage: 230VAC 50HZ	< 1.5W

7. COOLING OF PSU

A DC FAN was equipped to Cooling The Power Supply and system Load , The FAN will draw in AIR Through The vent Holes in DC Output Cable Side , and Exhaust it in The AC Receptacle Side.

Fan parameters

Rated voltage	12VDC
Dimensions	38*38*28 (mm)
Air flow	11 CFM min.
Noise	39.3 dBA max.
Quantity	2 pcs

8. ACTIVE POWER FACTOR CORRECTION (PFC):

8.1 Harmonic current meets IEC1000-3-2 / EN61000-3-2 standards.

8.2 PFC >0.95 at full load.

0.99% typical at AC 110v 60Hz, 98% typical at AC 220v 50Hz

9. ENVIRONMENT**9.1 OPERATING**

Temperature: 0 to 50 °C. (The rated power will derate from 100% to 80% from 40°C to 50 °C Linearly)

Relative Humidity: 20% to 80%

9.2 SHIPPING / STORAGE

Temperature: -40 to 85 Deg C

Relative Humidity: 10% to 95%

10. MTBF

Over 100,000 hours at 25 Deg C. excluding the DC Fan.

11. EMC

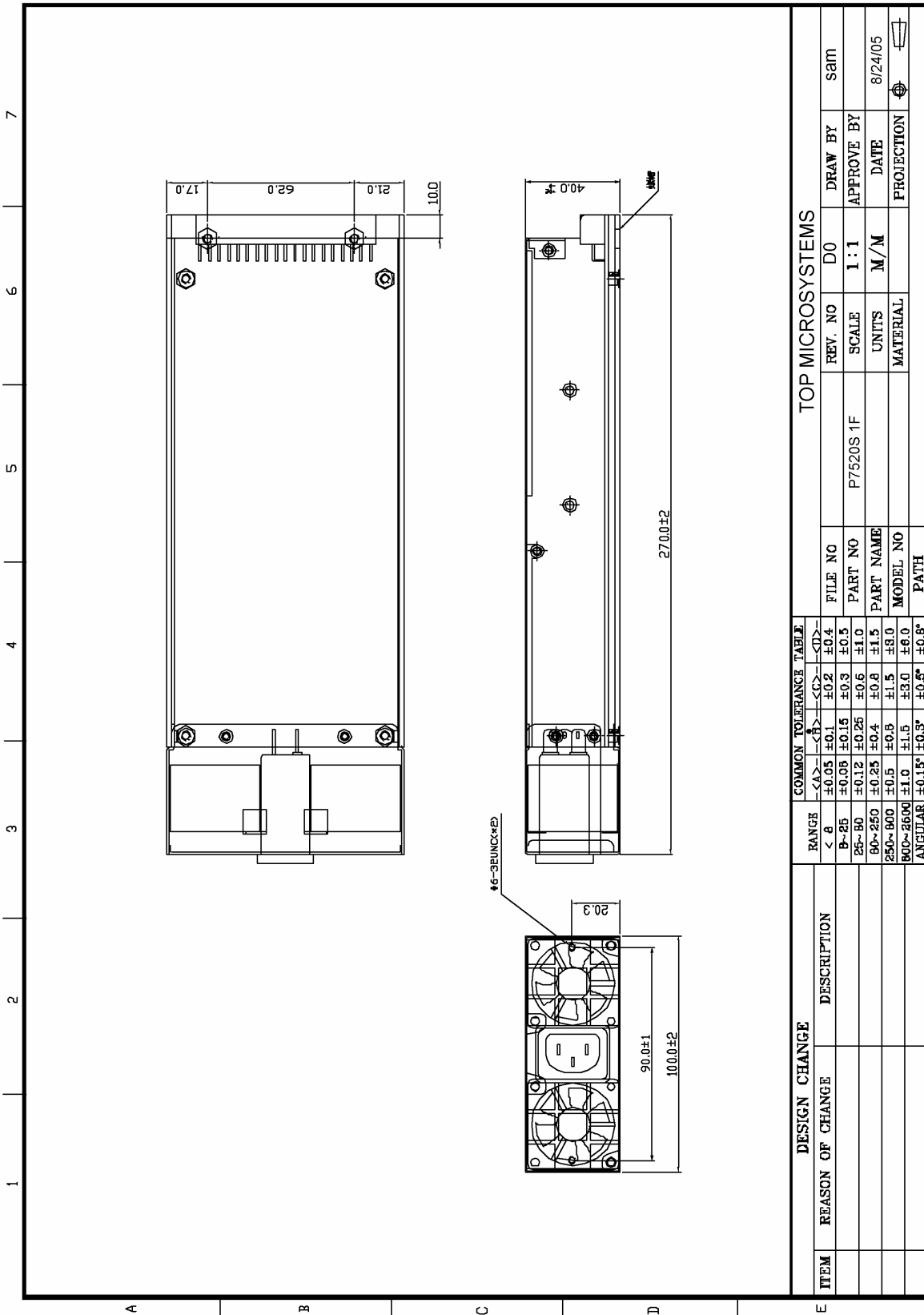
Comply to EN61204-3:2000, & FCC Part 15 & Part 2 (CISPR 22 CLASS B)
GB9254-1998, GB17625.1-2003 standards

12. SAFETY:

Designed to meet IEC60950-1:2000, EN60950-1:2001, UL60950-1 1st, GB4943-2001 standards : CB, TUV,CUL (LEVEL 3),CCC

13. MECHANICAL DRAWING:

Dimension: H40 x W100 x L270 mm



DESIGN CHANGE		COMMON TOLERANCE TABLE										TOP MICROSYSTEMS			
ITEM	REASON OF CHANGE	DESCRIPTION	RANGE	<A>		<C>	<D>	<E>	<F>	<G>	<H>	FILE NO	REV. NO	D0	DRAW BY
			< 6	±0.05	±0.1	±0.2	±0.4	±0.4	±0.4	±0.4	±0.4	P7520S 1F	1 : 1	M/M	8/24/05
			6~25	±0.08	±0.15	±0.3	±0.6	±1.0	±1.0	±1.0	±1.0				
			25~80	±0.12	±0.25	±0.6	±1.0	±1.5	±1.5	±1.5	±1.5				
			80~250	±0.25	±0.4	±0.8	±1.5	±3.0	±3.0	±3.0	±3.0				
			250~800	±0.5	±0.9	±1.5	±3.0	±6.0	±6.0	±6.0	±6.0				
			800~2600	±1.0	±1.5	±3.0	±6.0	±12.0	±12.0	±12.0	±12.0				
			ANGULAR	±0.15°	±0.3°	±0.5°	±0.8°	±1.2°	±1.5°	±2.0°	±2.5°				

Doc. No:RP-04-02-14 Rev. No:1.1