

## 18W US Type 5-18VDC Output

### Features

- DOE Efficiency Level VI
- UL/cUL, FCC Approved
- Overcurrent Protection
- Short Circuit Protection
- Input Protection
- RoHS Compliant



### General

- Insulation Resistance
- Primary to Secondary ..... 50Mohm Min.
- Efficiency ..... Level VI
- Standby Power ..... 0.1W Max.
- Leakage Current ..... 0.25mA Max.

### Environmental

- Operating Temperature ..... 10°C~40°C
- Cooling ..... Convection
- Temperature Coefficient ..... 0.05%/°C
- Humidity ..... 5~95%RH(non-condensing)
- Storage Temperature ..... -20°C~+80°C

### Mechanical

- Dimensions ..... 71\*43\*29mm

### Model Selection

Part Number	Output Voltage	Output Current	Ripple & Noise	Efficiency
W060025YY-US	6V	2500mA	90mv	VI
W120015YY-US	12V	1500mA	120mv	VI
W180010YY-US	18V	1000mA	150mv	VI

### Input

- Input Voltage ..... 90~264VAC
- Input Frequency ..... 47~63Hz
- Input Current ..... 1.2A Max.
- Inrush Current ..... 40A Max.

### Output

- Output Voltage Range ..... 5~18V
- Output Current Range ..... 100~2500mA
- Output Power Range ..... 0~18W
- Short Circuit Protection ..... Automatic Recovery
- Over-Current Protection ..... Automatic Recovery
- Ripple and Noise ..... 240mVp-p Max.
- Turn OnTime ..... 20-30mS Nom.
- Line Regulation ..... 1% Max.
- Output Regulation ..... ±5%

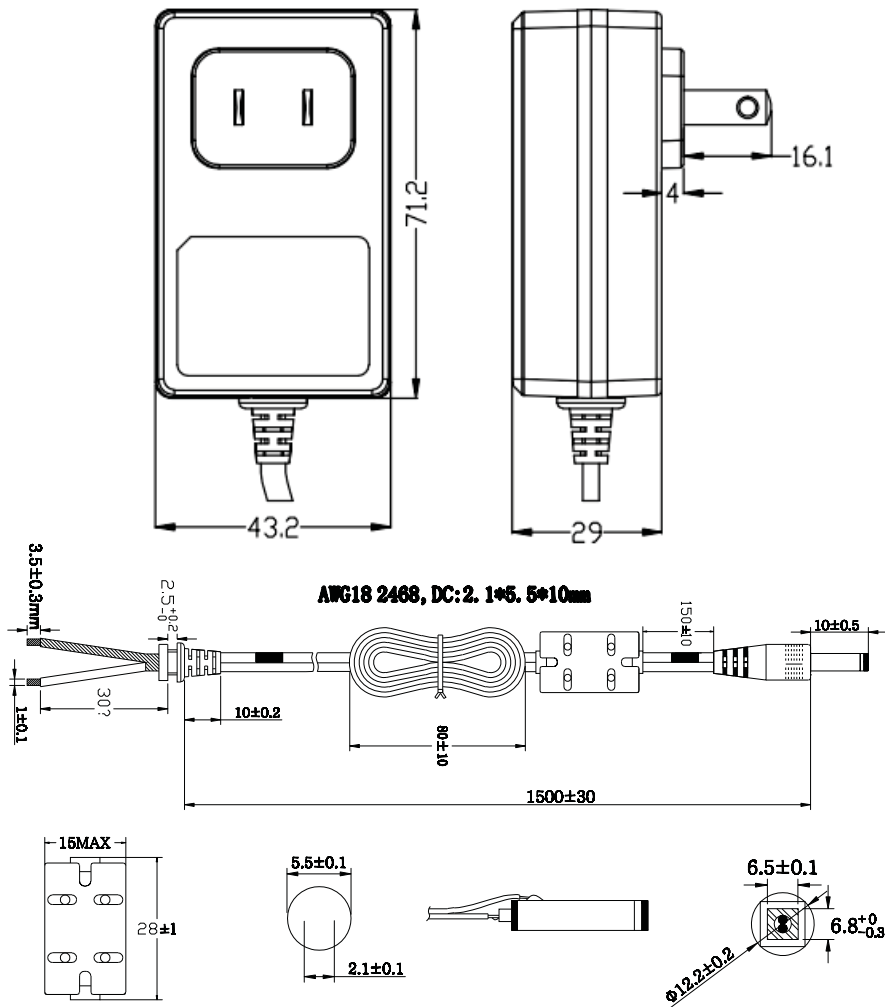
Print Name

Signature

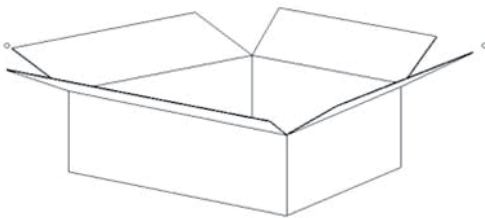
Company

Date

## Mechanical Drawing



## Packing



Master Carton:  
510x390x220mm  
12.5KG/carton  
90pcs/Carton



Inner White Box