

Specification

P/N: LHK-12500 CEC

**High Quality AC/DC
Linear Wallmount Adaptor
6W 12VDC 500mA Output
120VAC Input**

*** Specification Approval ***

This specification (total 4 pages including cover page) in its entirety is approved by:

Company Name

Print Name

Signature

Date

Specification subject to change without prior notice.



3261 Keller St.
Santa Clara, CA 95054
Tel: 408-980-9813
Fax: 408-980-8626
E-mail: infor@topmicro.com
Online: www.topmicro.com

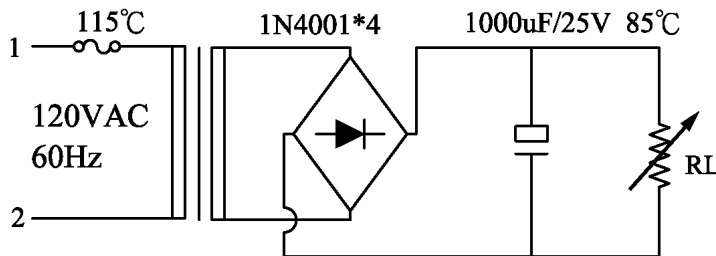
CORE TYPE: EI-41

1. SURFACE :damage,rusting,foam not permitted.
2. STRAIN RELIEF TEST: 20LBS for 60 seconds in any direction.
3. CHARACTERISTICS:
 - 3.1 PRIMARY RATED VOLTAGE & LINE FREQUENCY: 120 VAC 60 Hz.
 - 3.1.1 EXCITING CURRENT(Io): 30 mA MAX.At primary rated voltage.
 - 3.2 SECONDARY RATED VOLTAGE AND CURRENT:

RATED VOLTAGE	RATED CURRENT	NO LOAD VOLTAGE	RIPPLE VOLTAGE	REMARK
DC 12V±5%	DC 500mA	DC 19.5VMAX		

- 3.3 HI-POT TEST: Shall withstand without breakdown 1.5 KV 60 Hz for one minute between blades and output plug and case.At an alternative potentials 20% higher may be applied for one second.(sensivity current: 1.0 mA)
- 3.4 INSULATION TEST : 500 VDC 100 megaohm min.between blades and output plug and case.
- 3.5 TEMPERATURE RISE : 75 °C Max. (at 25°C) with load show on the circuit.
- 3.6 THIS SPECIFICATION SUBJECT TO:UL/CUL 1310
- 3.7 .THE ADAPTOR MEETS THE REQUIREMENT OF LEAD FREE AND RoHS.
- 3.8 The Secondary Unload Loss Power less than 0.5W @ 115VAC 60Hz.
- 3.9 The average efficiency of 25%, 50% ,75% and 100% Loading is 66.13% MIN. when input 115VAC 60Hz test method meet CEC Standards.

4. CIRCUIT DIAGRAM:

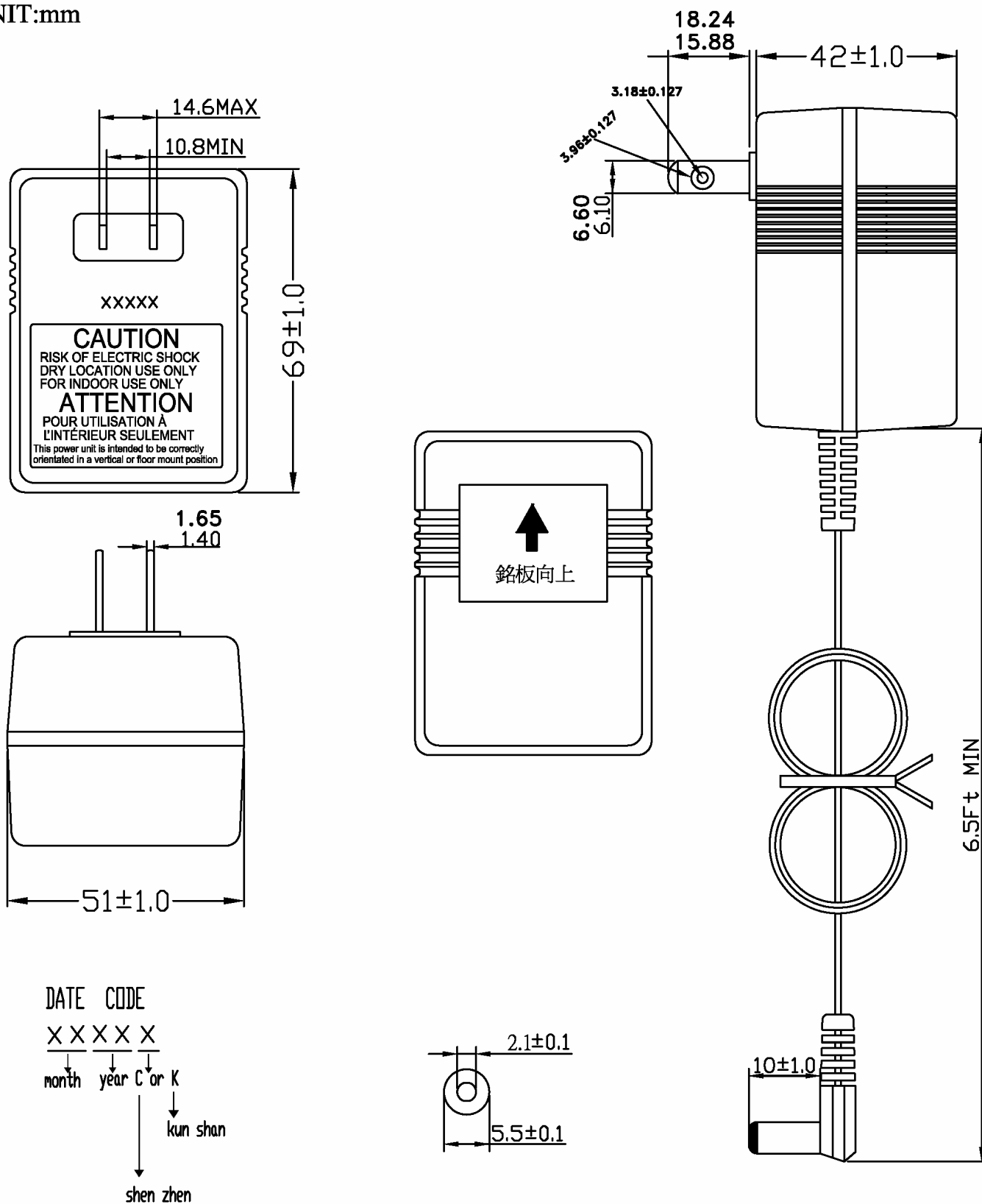


5. OUTPUT PLUG: 5.5 X 2.1 X 10 (L-B) ,OUTPUT CORD: AWG#24 UL2468, 6.0Ft MIN



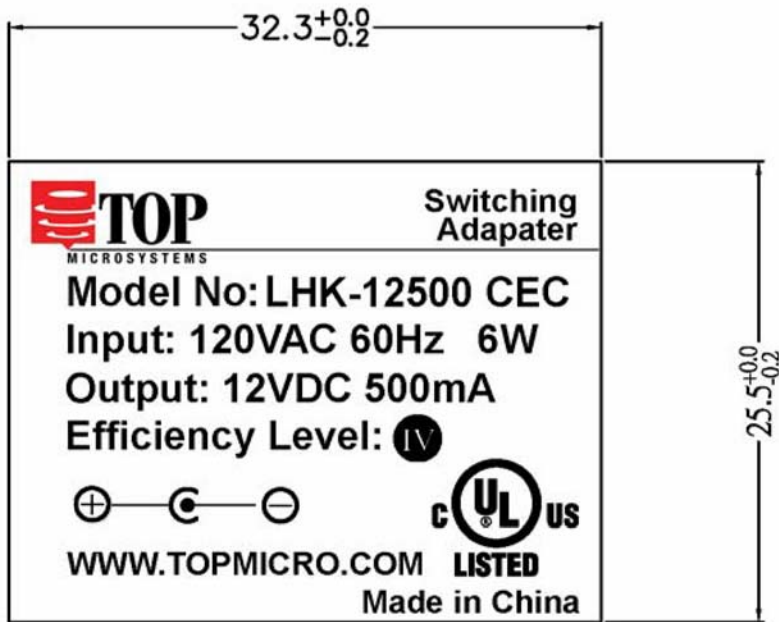
6. STORAGE TEMPERATURE : -5°C ~ 60°C
7. OPERATION TEMPERATURE : -5°C ~ 30°C
8. APPENDIX: Overall drawing , illustration , material list , nameplate, inner box and package drawing.
9. UNIT NET WEIGHT: 282 g±5%

UNIT:mm



DATE CODE
X X X X X
↓ ↓ ↓ ↓ ↓
month year C or K
↓ ↓
kun shan
↓
shen zhen

UNIT:mm



0.2mm TKSMI#200 NAME-PLATE:BLACK CHARACTERS SILVER BACKGROUND.

THE ABOVE MARKING IS OUR OWN DESIGN FOR NAMEPLATE.
IF YOU WANT TO CHANGE THE LOGO,
PLEASE PROVIDE US MORE DETAILS OF YOUR ARTWORK.